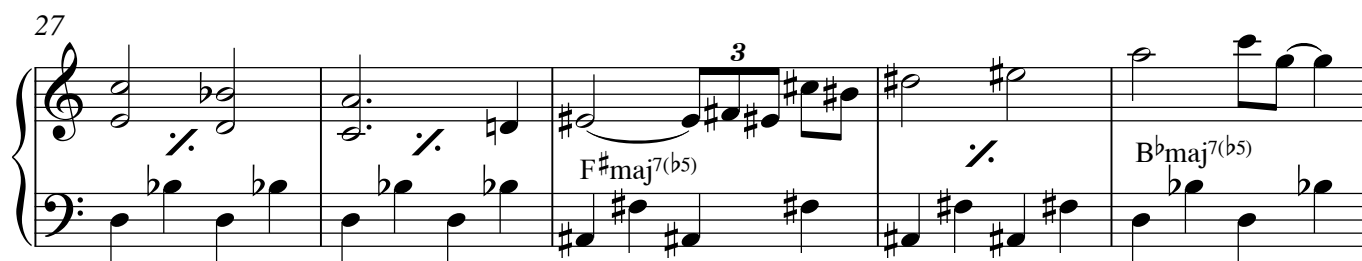
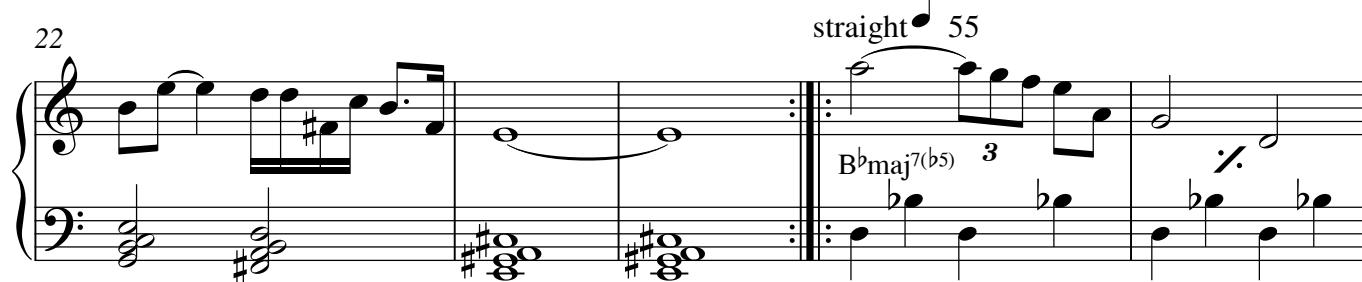
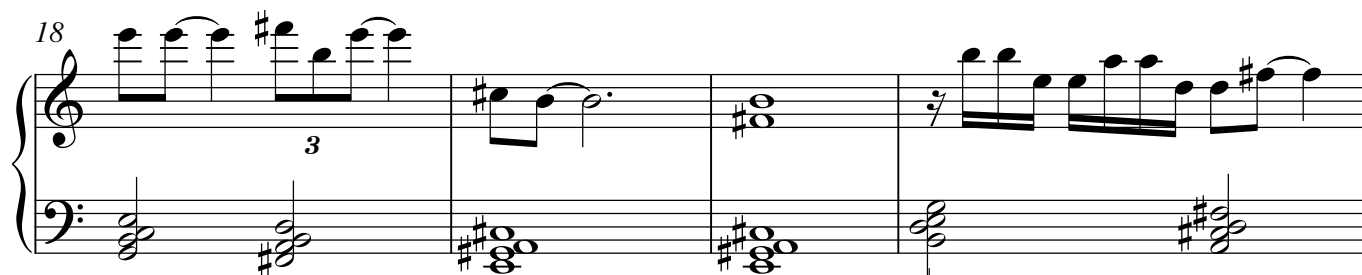
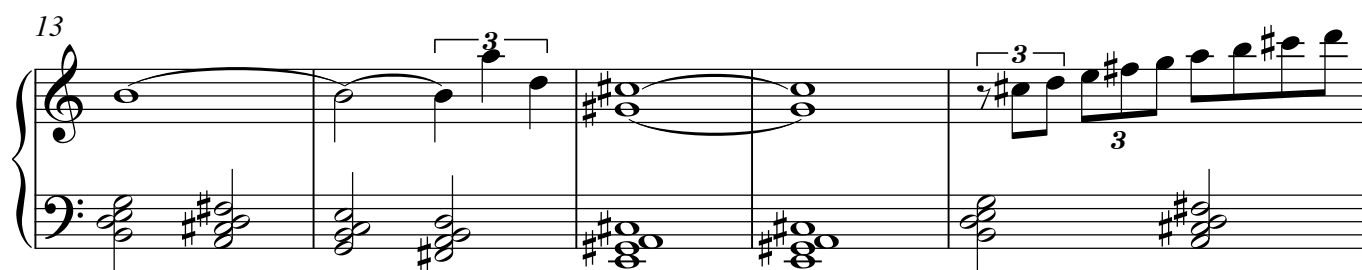
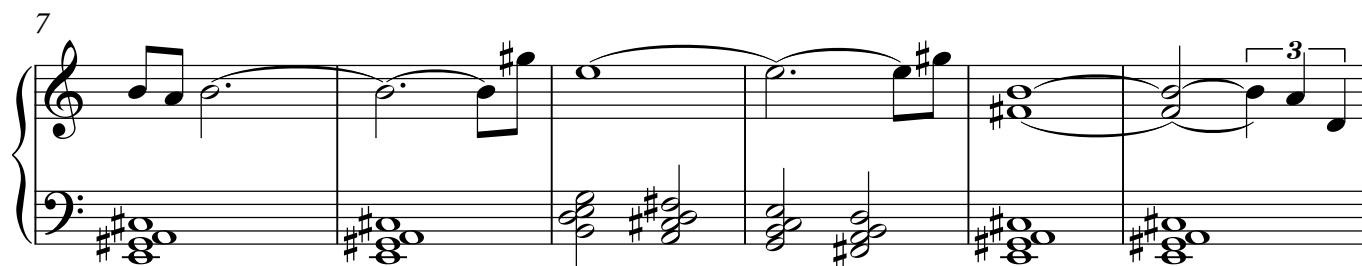
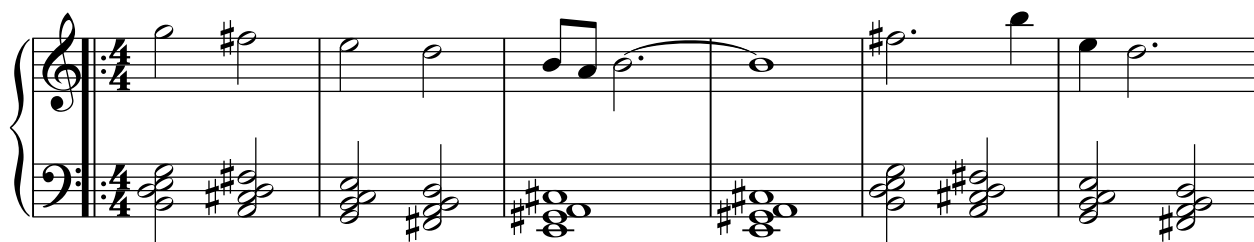


straight ♩ = 110

sampler 4 suite reattiva

roberto andreucci



32

Emaj⁷(b5) C#maj⁷(b5)

This system contains measures 32, 33, and 34. Measure 32 features a treble clef with a whole rest and a bass clef with a whole note chord of Bb2, Bb3, and Bb4. Measure 33 has a treble clef with a descending eighth-note scale (F#4, E4, D#4, C#4, B3, A3, G3, F#3) and a bass clef with a whole note chord of F#2, A2, B2, and C#3. Measure 34 has a treble clef with a descending eighth-note scale (F#4, E4, D#4, C#4, B3, A3, G3, F#3) and a bass clef with a whole note chord of F#2, A2, B2, and C#3. Chord labels 'Emaj⁷(b5)' and 'C#maj⁷(b5)' are placed above the bass staff in measures 33 and 34 respectively.

35

Emaj⁷(b5) C#maj⁷(b5)

This system contains measures 35 and 36. Measure 35 has a treble clef with a descending eighth-note scale (F#4, E4, D#4, C#4, B3, A3, G3, F#3) and a bass clef with a whole note chord of F#2, A2, B2, and C#3. Measure 36 has a treble clef with a descending eighth-note scale (F#4, E4, D#4, C#4, B3, A3, G3, F#3) and a bass clef with a whole note chord of F#2, A2, B2, and C#3. Chord labels 'Emaj⁷(b5)' and 'C#maj⁷(b5)' are placed above the bass staff in measures 35 and 36 respectively. The system ends with a double bar line and repeat dots in both staves.